

SAWYER

29202SQ

SMALL WALL MOUNT LANTERN

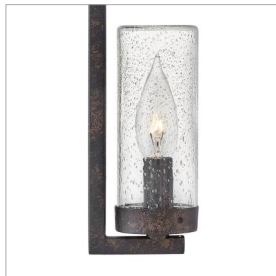
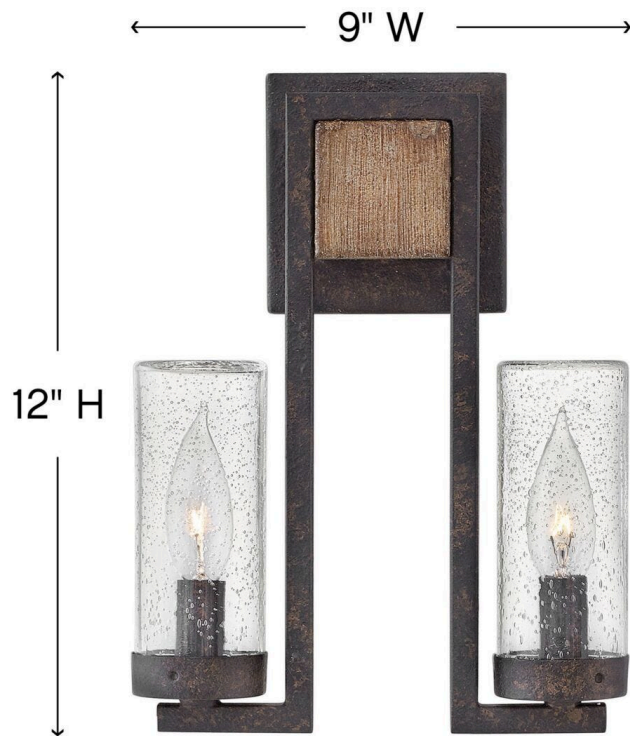
The fresh, rustic design of the Sawyer collection will inject any outdoor living experience with the warm, cozy ambiance of an indoor setting. Constructed with Hinkley's own anti-corrosion coating, Sawyer ensures maximum resiliency and performance in the elements.

DETAILS	
FINISH:	Sequoia
MATERIAL:	Metal
GLASS:	Clear Seedy
DIMMABLE:	No

DIMENSIONS	
WIDTH:	9"
HEIGHT:	12"
WEIGHT:	3lb
BACK PLATE:	4.5" Sq.
EXTENSION:	2.8"
TOP TO OUTLET:	2.250000"

LIGHT SOURCE	
LIGHT SOURCE:	Socketed
VOLTAGE:	120v

SHIPPING	
CARTON LENGTH:	14.3
CARTON WIDTH:	5.3
CARTON HEIGHT:	13.5
CARTON WEIGHT:	4



PRODUCT DETAILS

- Mounting hardware is hidden on the back plate to ensure a clean silhouette
- Suitable for use in wet (outdoor direct rain) locations as defined by NEC and CEC. Meets United States UL Underwriters Laboratories & CSA Canadian Standards Association Product Safety Standards
- ADA compliant
- Ideal for vintage filament bulbs (not included)
- 2-year finish warranty
- Rustic elements with bold, refined details complement a variety of facades from farmhouse to contemporary architecture
- Rich rustic finish with a warm artisanal appearance

HINKLEY

HINKLEY
33000 Pin Oak Parkway
Avon Lake, OH 44012

PHONE: (440) 653-5500
Toll Free: 1 (800) 446-5539

hinkley.com